

The Veterinarian's **Choice**



Six



Compact & Complete

MyLabDelta Mobile

Making the Difference!



Features

- **ROBUST AND SPLASH PROOF!**
- Easy to clean
- 2 transducer connectors on board
- 13.3" LCD wide screen monitor
- Long lasting / fast charging battery
- 15 seconds battery-based start-up time
- Height adjustable robust trolley with 4 large swiveling wheels
- Trolley for mobile use



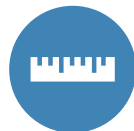
Patient ID/Owner Name

The patient demographic screen is dedicated to the veterinary environment with fields for the animal's name as well as species and breed.



Application Selection

The veterinary application software makes it easy to choose from a list of applications before starting the examination. After selecting the application, the system automatically displays the presets corresponding to the chosen purpose. A dedicated application icon is shown on the screen, confirming that the correct settings are selected.



Measurements and Reports

Confirming Esaote's dedication to the veterinary world, complete veterinary measurement packages, including abdominal, cardiology, and reproductive gestational calculations provide easy exam documentation.



Body Marks

Using a body mark to show the exact position that the scan was done is useful. But being able to indicate this with a body mark that actually resembles the scanned species is even better. During or after an exam or measurement it is very easy to "mark" the exact area of examination using the dedicated veterinary body marks.



Image Quality

You can rely on excellent image quality to aid fast and accurate diagnosis with both Esaote systems, with any application or probe.

MyLabDelta and MyLabSix are based on the same technology platform. Esaote offers the best solution for any situation, in any environment; MyLabDelta as a robust, portable for mobile use, or MyLabSix for more stationary use. Both systems can cover all examination needs in your practice; any species and every application, from small to large dogs, cats, and exotic animals to equine and farm animals. From abdominal, reproductive, and musculoskeletal to cardiology imaging.

Office MyLabSix



Modularity

Both systems can be configured to your needs. The base is the B/W version with an OPUS SC3123 micro-convex transducer. Optional standard transducers are available; the systems can even be enhanced, both in terms of quality with extended licence transducers and in terms of functionality (advanced cardiology) with phased array transducers. Doppler and color Doppler are additional options to ensure optimal modularity for every need.



MyLab™Desk³

With MyLab™Desk³ installed on your PC you can easily copy your entire archive from the ultrasound system onto a standard PC to conveniently review and process images.



Wireless Windows® and DICOM Connectivity

Both systems are designed for limitless wireless connectivity and can be easily implemented in any Windows® or DICOM environment. Access to wireless connectivity, easy networking, printing, and communication with external PCs are just one click away.



Remote Troubleshooting and Services

Your system will be recovered in the shortest time possible. Via the Internet, Esaote's Service Team can easily troubleshoot any issues, perform proactive maintenance, and monitor performance.



Features

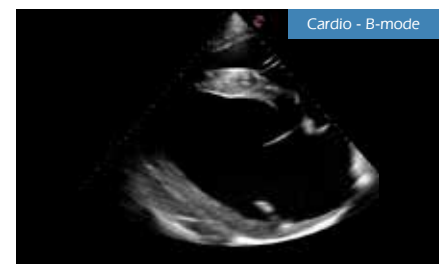
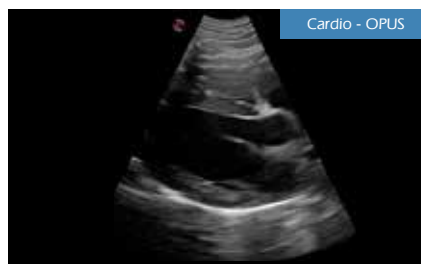
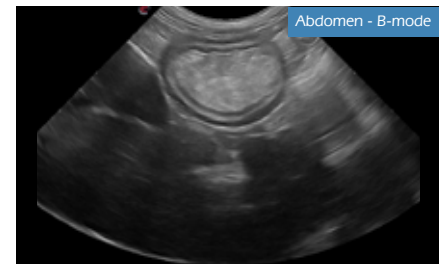
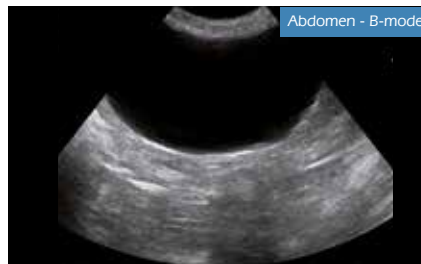
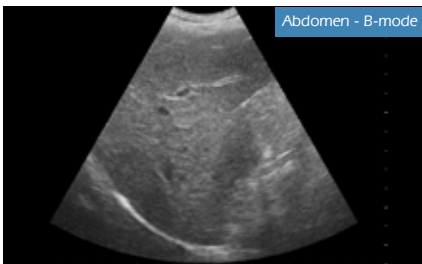
- 3 transducer connectors
- 19" rotatable widescreen monitor
- Transducer cable organiser
- Storage shelf
- Four 360° rotatable wheels
- Height-adjustable rotatable keyboard

Small Animals



Excellent image quality

MyLabDelta and MyLabSix both provide impressive image quality in a wide range of applications. Besides B-mode, M-mode and Doppler imaging, the systems offer multiple advanced technologies to meet every clinical need.



For over 30 years, Esaote has been the market leader in meeting the imaging needs of the veterinarians in their daily practice. Fully dedicated functionality, high image quality, and easy operation are the key attributes. Both MyLabSix and the portable MyLabDelta are designed to fulfill the small animal veterinarian's expectations.

OPUS

One Probe Ultrasound Solution



SC3123 Micro-Convex Probe

This unique micro-convex transducer is designed for abdominal as well as basic heart ultrasounds. Its wide frequency range means it can be used for cats, dogs of different sizes, and exotic animals.. This makes SC3123 the truly a 'One Probe Ultrasound Solution' in daily veterinary practice.

Transducers



SC3123

Abdominal scanning and basic cardiology in dogs, cats, and exotic animals.

- 10-6 Mhz
- Up to 93° scan angle



AC2541

Abdominal imaging, large dogs and large-sized exotic animals

- 8-1 MHz
- Up to 63° scan angle



SL3323

MSK in dogs and cats and general imaging of exotic animals

- 13-6 MHz
- 40 mm



SL1543

MSK in dogs and cats and general imaging of exotic animals

- 13-4 MHz
- 47 mm



SP2730

Low-frequency phased array transducer for advanced cardiac examination in larger animals

- 5-1 MHz
- Up to 87° scan angle



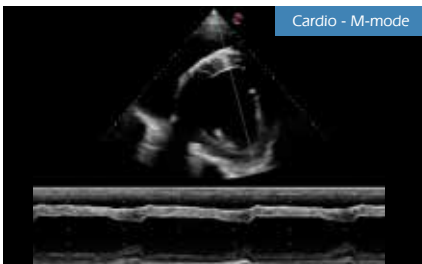
P3-11

Mid/high-frequency phased array transducer for advanced cardiac examinations in mid- and small-sized species

- 11-3 MHz
- Up to 89° scan angle

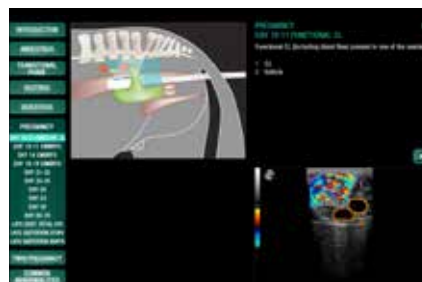
Biopsy guides are available as an option for all relevant transducers

Equine & Farm Animals



Libraries

MyLibrary is an innovative application and dedicated tool integrated in both systems for users' reference, which includes anatomical atlases and "How To" reference images, so users can instantly and easily have access to a fast, thorough, and application-specific educational environment.



MyLabDelta and MyLabSix cover all possible equine and farm animal applications. Specific transducers are available for reproductive scanning, tendons and ligaments, cardiac and general imaging. The unique libraries supporting equine reproductive and tendon scanning confirm Esaote's commitment and leadership in the field.

Veterinary Endorectal Transducer



Veterinary Endorectal Transducer (SV3513)

The famous Esaote Veterinary Endorectal Transducer has a proven reputation based on its image quality, reliability, ergonomic design, and durability. This transducer is widely used for reproductive and MSK purposes in daily veterinary practice.

Transducers



SV3513

For all frequently occurring cases in daily large animal practice. This probe is excellent for reproductive and basic tendon scanning.

- 10-5 Mhz
- 50 mm



SP2730

Low-frequency phased array transducer for advanced cardiac examination in equine and large animals

- 5-1 MHz
- Up to 87° scan angle



SL3323

The ideal tendon transducer

- 13-6 MHz
- 40 mm



SL1543

Tendons and ligaments for the demanding specialist

- 13-4 MHz
- 47 mm



AC2541

Transabdominal reproductive scanning, general imaging, and MSK

- 8-1 MHz
- Up to 63° scan angle



SC3123

Specific transducer for hoof and pastern scanning

- 9-4 MHz
- Up to 93° scan angle

Biopsy guides are available as an option for all relevant transducers



Join the Global Leader in Veterinary Imaging

Esaote is the pioneer in ultrasound and MRI in the veterinary field. Esaote has over 30 years of market leadership and is a preferred supplier for veterinary practices, clinics, and research centers, and also for many zoos and wildlife institutions.

Offering the perfect products in terms of quality, functionality, price, service, and education, combined with a deep understanding of veterinarians' needs, guarantees our top position in the veterinary imaging market.

Please challenge us with your imaging, ultrasound, and/or MRI needs in your daily practice or specific projects. We would love to be your imaging partner.

160000085MAK Ver. 02

Esaote S.p.A.

Via di Caciolle, 15 50127 Florence, Italy, Tel. +39 055 4229 1, Fax +39 055 4229 208, international.sales@esaote.com
Via A. Siffredi, 58 16153 Genoa, Italy, Tel. +39 010 6547 1, Fax +39 010 6547 275, info@esaote.com

FRANCE

Esaote Medical SAS
ZA du Bel Air
10, rue de Témar, 78105 Saint-Germain-en-Laye
Tel. +33 1 8204 8900, Fax +33 1 3061 7210
info@esaote.fr

BRASIL

Esaote Healthcare do Brasil
Rua Tomas Carvalhal, 711
04006-001 São Paulo SP
Tel. +55 11 2789 0400 Fax +55 11 2789 0432
comercial@esaote.com.br

GERMANY

Esaote Europe B.V. – Niederlassung Deutschland
Max-Planck-Straße 27a
50858 Köln
Tel. +49 2234 688 5632, Fax +49 2234 967 9628
info@esaote.de, www.esaote.de

ARGENTINA

Esaote Latinoamérica S.A.
San Martín 551, Cuerpo 'C', Piso 8, (C1004AAK) Buenos Aires
Tel. +54 11 4326 1832, Fax: +54 11 4328 1245
info@esaote.com.ar

SPAIN

Esaote España S.A.
C/. Pont Reixat, 5
08960 Sant Just Desvern, Barcelona
Tel. +34 93 473 2090, Fax +34 93 473 2042
info@esaote.es

INDIA

Esaote Asia Pacific Diagnostic Private Limited
DLF IT Park, A - 44 & 45, Tower- C, Ground Floor,
Sector- 62, Noida, Uttar Pradesh, India
Pin Code: 201 301
Tel. +91 120 4732444, Fax +91 120 4750148
info@esaote.in

THE NETHERLANDS AND BELGIUM

Esaote Benelux B.V.
Philippsweg 1
6227 AJ Maastricht
Tel. +31 43 3824650, Fax +31 43 3824651
benelux@esaote.nl

HONG KONG AND FAR EAST

Esaote China Ltd
18/F, 135 Bonham Strand Trade Centre,
135 Bonham Strand, Sheung Wan, Hong Kong
Tel. +852 2545 8386, Fax +852 2543 3068
esaote@esaotechina.com

UK

Esaote UK
14, Cambridge Science Park
Milton Road, Cambridge, CB4 0FQ
Tel. +44 1223 424499, Fax +44 709 288 0231
infoUK@esaote.com

CHINA

Esaote Shenzhen Medical Equipment
Room 2608, Tower B
Beijing Global Trade Center
36 North Third Ring Road East,
Dongcheng District, 100013, Beijing
Tel. +86 010 58257766, Fax +86 010 52257760

NORTH AMERICA

Esaote North America
8000 Castleway Drive,
Indianapolis, IN 46250
Tel. +1 317 813 6000, Fax +1 317 813 6600
inquire@esaoteusa.com

RUSSIAN FEDERATION AND CIS

Esaote S.p.A.
18 Leningradsky prospekt
Off. 5 and 6, Moscow 125040
Tel. +7 495 232 0205, Fax +7 495 232 1833
esaotemoscow@yandex.ru



0123

0344



Windows® is a registered trademark of Microsoft Corporation
Technology and features are system/configuration dependent.
Specifications subject to change without notice. Information might refer to products or modalities not yet approved in all countries.
For further details, please contact your Esaote sales representative.